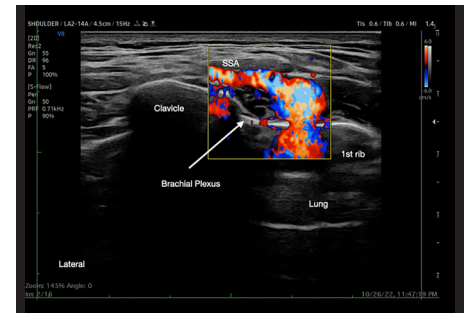
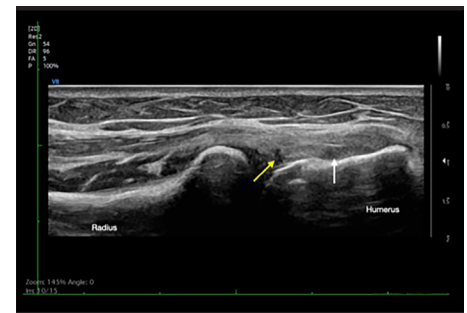




# V8 | Performance Versatility Intelligence



Suprascapular Fossa with Color



Elbow CETO

The **V8** ultrasound system powered by Samsung's Crystal Architecture™ combines exquisite image quality with a streamlined user interface enabled by Intelligent Assist tools. The reengineered workflow fulfills the needs of today's busy clinical environment. Samsung is continuously seeking new ways to elevate diagnostic confidence with greater image clarity, enhanced accuracy, and improved work efficiency.



Click or Scan  
to Learn More

### Advanced Imaging Technologies

**MV-Flow™** is an advanced Doppler technology providing detailed documentation of microvascular perfusion into tissues and organs.

**LumiFlow™** displays a three-dimensional "like" appearance to 2D color Doppler enhancing spatial comprehension of blood vessels.

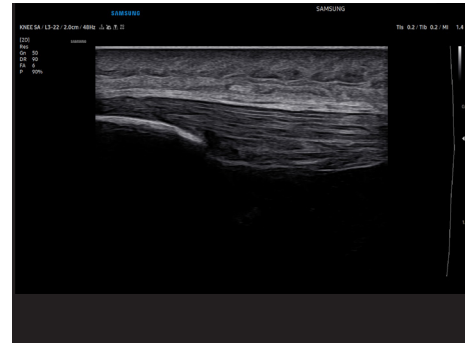
**EzExam+™** transforms the ultrasound examination into a well-organized streamlined process. EzExam+ enables the user to create an efficient diagnostic environment storing optimized and preferred protocols within the EzExam+ function control.

### Intelligent Assist Tools

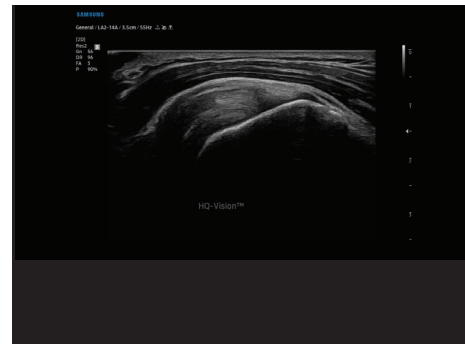
**S-Shearwave Imaging™** allows for the non-invasive assessment of the stiffness for tissue/lesions. Color-coded elastogram, quantitative measurements, dual or single display option, and user-selectable ROI functions are useful for more confident assessments.

**NerveTrack™** provides nerve area location information during real-time ultrasound scanning.

**Panoramic+™** displays as an extended field-of-view & also supports angular scanning from linear transducer data acquisition.



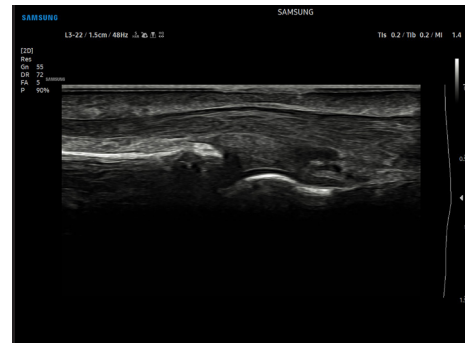
Patellar Tendon



Shoulder HQ-Vision



Tendon Insertion Tibia



Digit



CA3-10A

Broad Bandwidth Curved Array  
58°  
3-10 MHz



LA2-14A

Broad Bandwidth Linear  
55mm  
2-14 MHz



L3-22

Broad Bandwidth Linear  
26mm  
3-22 MHz



LA3-22AI

Broad Bandwidth Linear  
25.5mm  
3-22 MHz