

V7 | Performance Versatility

Combining Performance & Versatility

The V7 provides reliable performance while offering comprehensive tools with the latest sonographic innovations. Rich in technologies, the V7 provides a full suite of options to meet your imaging needs.



Shoulder Panoramic+™



Advanced Imaging Technologies

MV-Flow™ - is an advanced Doppler technology providing detailed documentation of microvascular perfusion into tissues and organs.

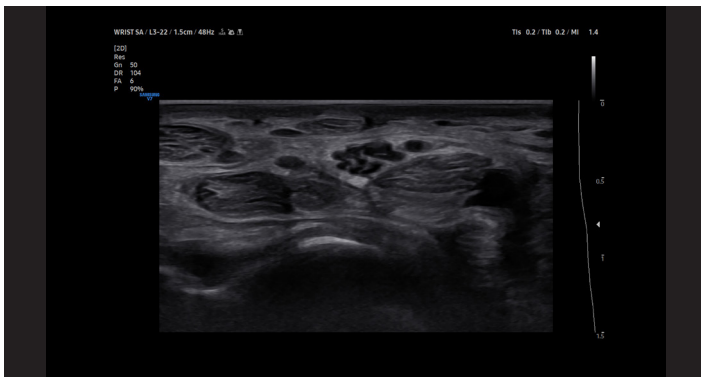
LumiFlow™ - displays a three-dimensional "like" appearance to 2D color Doppler enhancing spatial comprehension of blood vessels.

EzExam+™ - transforms the ultrasound examination into a well-organized streamlined process. EzExam+ enables the user to create an efficient diagnostic environment storing optimized and preferred protocols within the EzExam+ function control.

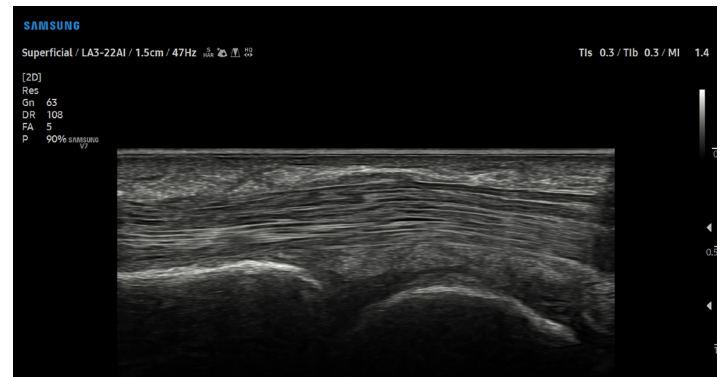
S-Shearwave Imaging™ - allows for the non-invasive assessment of the stiffness for tissue/lesions. Color-coded elastogram, quantitative measurements, dual or single display option, and user-selectable ROI functions are useful for more confident assessments.

NerveTrack™ - provides nerve area location information during real-time ultrasound scanning.

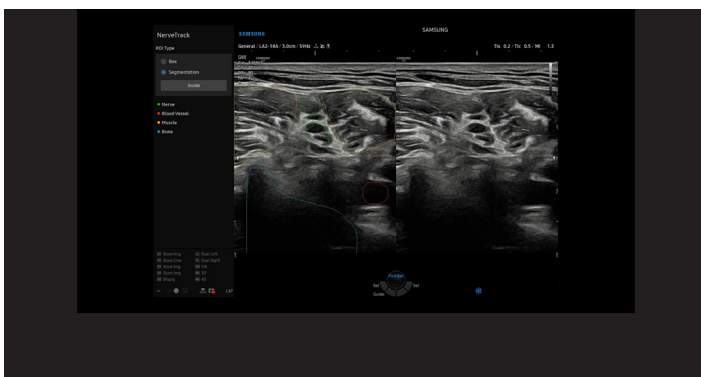
Panoramic+™ - displays as an extended field-of-view & also supports angular scanning from linear transducer data acquisition.



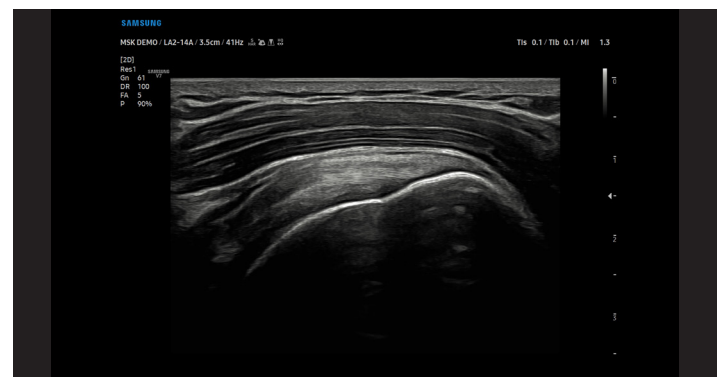
Wrist with Median Nerve



Flexor Tendon



NerveTrack™ Segmentation



Biceps Tendon



CA3-10A
Broad Bandwidth Curved Array
58°
3-10 MHz



LA2-14A
Broad Bandwidth Linear
55mm
2-14 MHz



L3-22
Broad Bandwidth Linear
26mm
3-22 MHz



LA3-22AI
Broad Bandwidth Linear
25.5mm
3-22 MHz